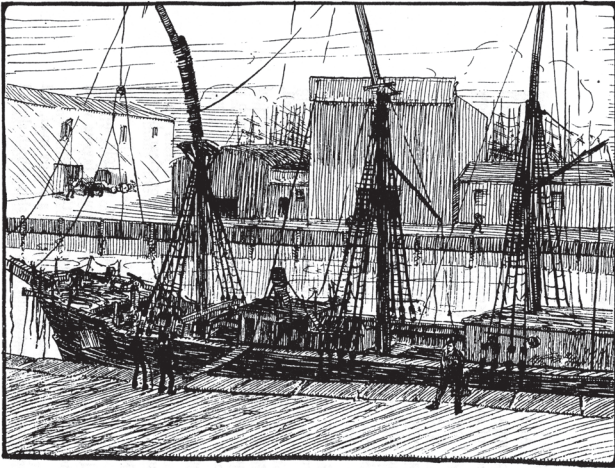


# A NIMROD Quiz



9th Annual Shackleton Autumn School  
Athy, Co. Kildare, 2009

## A NIMROD Quiz

*There may be no answer or more than one. Consult your table-mates.*

1. *What does the word Nimrod mean?*  Valiant, strong.  
 Mighty hunter.  Silly, foolish person.  
 Great grandson of Noah.
2. *What was her previous name?*  Bjørn  Stern  Polaris  
 Polar Star.
3. *What was Nimrod's last British port of call as she headed south?*  
 Cardiff  Torquay  Cowes  Plymouth
4. *On 31 October 1907 Shackleton left Britain by train for Marseilles to catch a P & O liner for Australia. From what rail station did he leave?*  Victoria  Charing Cross  Waterloo  Paddington
5. *Who was the master of the Nimrod?*  
FIRST VOYAGE:  William Colbeck  John King Davis  
 Rupert England  Frederick Pryce Evans  C.A. Larsen  
 J.R. Stenhouse  
  
SECOND VOYAGE:  William Colbeck  John King Davis  
 Rupert England  Frederick Pryce Evans  C.A. Larsen  
 J.R. Stenhouse
6. *About how far below the Plimsoll line was the Nimrod when she departed Lyttelton?*  1 foot  2 feet  3 feet  4 feet
7. *In 1907 Shackleton sought support for the expedition from the Royal Geographical Society. At that time who was president?*  
 Markham  Keltie  Goldie  Darwin
8. *How thick in inches was the cable used by the Koonya to tow the Nimrod?*  1  2  3  4  5
9. *How much Golden Syrup did the expedition take south in 1908?*  
 123 lbs.  254 lbs.  336 lbs.  487 lbs.
10. *How many were in the Shore Party at Cape Royds?*  
 12  15  18  22
11. *Who was the oldest member of the Shore Party?*  
 David  Wild  Shackleton  Murray

12. *Who was the youngest member of the Shore Party?*  
 Roberts  Day  Armytage  Brocklehurst
13. *Which man's mother was a direct descendant of Captain Cook?*  
 Murray  Wild  Brocklehurst  Adams
14. *What university was Prof David associated with?*  
 University of Cambridge  University of Sydney  
 University of Canterbury  University of South Australia
15. *Captain Oates was to Scott's Terra Nova expedition, as who was (were) to Shackleton's Nimrod expedition?*  
 Armytage  Joyce  Brocklehurst  Mawson
16. *What is the approximate gross square footage of the Cape Royds hut?*  592  627  713  1,106
17. *The door of the hut at Cape Royds faces in what direction?*  
 South  Northeast  Southwest  Northwest
18. *Around Cape Royds are several lakes. Which one can't be found there?*  Blue Lake  Clear Lake  Skua Lake  
 Green Lake  Tarn Lake  Coast Lake  Pony Lake
19. *About how many miles is it to walk from Cape Royds to Hut Point?*  13  17  20  41
20. *What make was the motor vehicle taken on the expedition?*  
 Arol-Johnson  Arrol-Johnson  Arol-Johnston  
 Arrol-Johnston
21. *Who owned the company that made it?*  Kinsey  Beardmore  
 Bell  Dawson-Lambton
22. *Who did not reach the summit on the climb up Mt Erebus?*  
 David  Mawson  Brocklehurst  Mackay  Adams  
 Marshall
23. *Who of these were not on the journey to the South Magnetic Pole?*  
 Mackay  David  Priestley  Mawson  Armytage
24. *In what city can be found the flag that flew at the South Magnetic Pole?*  Canberra  Christchurch  Cambridge  Adelaide

25. *What did Macintosh lose?*  Right Ear  Left Ear  
 Right Eye  Left Eye
26. *What did Brocklehurst lose?*  Left toe  Right toe  
 Left Thumb  Right Thumb
27. *Of the ten ponies that set off in the Nimrod, which was the first \_\_\_\_\_ and the last \_\_\_\_\_ to die?* 1. Billy 2. Chinaman 3. Doctor  
 4. Grisi 5. Mac 6. Nimrod 7. Quan 8. Sandy 9. Socks  
 10. Zulu
28. *Who did not assist in the illustrating, printing and/or binding of the Aurora Australis?*  Joyce  Day  Mackay  Wild  
 Marston
29. *What other name was considered for the Aurora Australis?*  
 Penguins A-Plenty  Antarctic Ice-Flowers  Southward Ho!  
 Forty Below
30. *What did the Polar Party drink with their cigars on Christmas day 1908?*  Brandy  Crème de menthe  Cointreau  Port
31. *Who ‘assisted’ in the writing of The Heart of the Antarctic?*  
 Edward Saunders  Hugh Robert Mill  William Bell  
 Alexander Davis
32. *Shackleton returned to England arriving at what port?*  Plymouth  
 Southampton  Eastbourne  Dover
33. *From that port Shackleton travelled to London by train. At what rail station did he get a tumultuous welcome home?*  Victoria  
 Charing Cross  Waterloo  Paddington  
*and who were among the welcoming party?*  Scott  Markham  
 Queen Alexandra  King Edward VII

---

TIE BREAKER.

*Who was the expedition’s Secretary?* \_\_\_\_\_

---

The cover illustration of the *Nimrod* is from the *Aurora Australis*.  
 Written and produced by Robert B. Stephenson.